

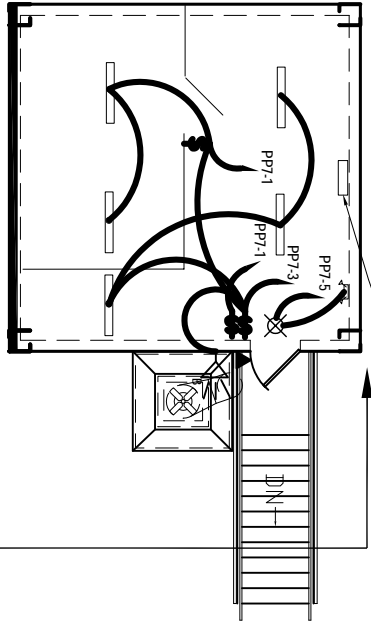
- LEGEND**
- NEW DUPLEX RECEPTACLE
 - EXHAUST FAN
 - SECURITY ACCESS DOOR (SCANNER BY OTHERS)
 - COMM @ DATA
 - COLUMN MOUNTED UTILITY
 - POWER AND COMM POLE
 - SINGLE POLE SWITCH
 - THREE-WAY SWITCH
 - EXIT LIGHT FIXTURE (BATTERY BACK UP), (SCANNER BY OTHERS)
 - TWO TUBE 4' FLOURESCENT
 - OUTSIDE FLOOD WORK LIGHTS 120/240 V 250W HPS W/ BATTERY BACKUP

NOTES

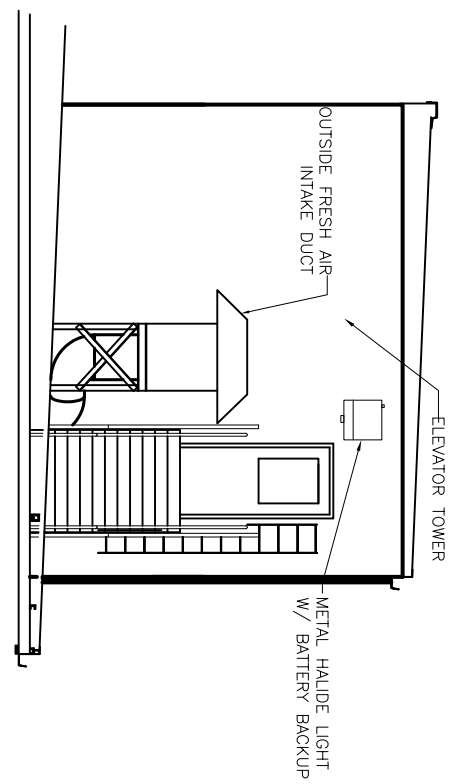
ALL NEW POWER PANELS ARE TO BE MOUNTED ON THE NORTH WALL OF THE MECHANICAL ROOMS

ROOF ELECTRICAL PLAN
SCALE: 1/8" = 1'-0"

PL-7 480/277V 3Ø 4 WIRE



ELEVATOR TOWER LIGHTING PLAN



SECTION
SCALE: 1/4" = 1'-0"

HVAC
REVISED: 11/09/07ab
REVISID: 09/11/07ab
REVISED: 09/01/07ab

CONTRACT SET- 10/10/07

RENOVATE OFFICE BUILDING		ROOF ELECTRICAL PLAN	
DAMMON ENGINEERING. INC.		ST. TAMMANY PARISH ADMIN. COMPLEX 520 OLD SPANISH TRAIL SLIDELL, LOUISIANA	
1095 FLORIDA AVENUE 985-649-5832 SLIDELL, LA. 70458 DAMMONENGINEERING.COM			
SCALE:AS NOTED	FILE:		
JOB NO. 1729	DATE:1-8-07		
SHEET			
E7	OF		